

MONOLITHIC RAIL PLATFORM

MRP



SPECS

| | |
|---------------|---|
| MODEL | MRP |
| CALIBER | 5.56 X 45 NATO, 300 BLACKOUT |
| OPERATION | DIRECT IMPINGEMENT |
| BARREL LENGTH | 10.5" - 20" |
| HANDGUARDS | 1913 STANAG 4694 RAIL, LM8, MLOK |
| FINISH | MIL-SPEC ANODIZED ALUMINUM MIL-SPEC PHOSPHATED STEEL |
| BUTTSTOCK | M4, SOPMOD, DMR |
| MUZZLE DEVICE | A2 BIRDCAGE OR LMT 3-PRONG |
| FIRE CONTROL | SAFE / SEMI / AUTO AVAILABLE |

OVERVIEW

With the development of the monolithic upper receiver, LMT® harmonized durability, modularity, and accuracy in the assault rifle platform. The MRP® is the most robust and accurate rifle system in service, and is absolutely the most modular. The availability of 3 buttstocks, 6 upper receivers, and over 14 barrels allow for at least 250 different configurations. This one system can fulfill the role of a close quarters battle rifle or a lightweight DMR, and it can make that transition in mere minutes without an armorer. The MRP® features an ambidextrous charging handle, fully ambidextrous lower, improved ergonomics, and is considered by many the next generation of infantry rifle.

BUTTSTOCK

| STOCK | WEIGHT DIFFERENCE | LENGTH DIFFERENCE | DESCRIPTION |
|--------|---------------------|-------------------|---|
| SOPMOD | STANDARD | STANDARD | SPECIAL OPERATIONS MOD STOCK, 6-POSITION, WITH RUBBER BUTT PAD, CHEEK WELD, AND WATERPROOF BATTERY TUBES. |
| M4 | -0.35 LB / -0.16 KG | -1" / -25.4 MM | M4 STANDARD ISSUE 6-POSITION BUTTSTOCK |
| DMR | +0.63 LB / +0.29 KG | +14" / +35.6 MM | DESIGNATED MARKSMAN STOCK 3-POSITION, WITH TELESCOPING RUBBER BUTT PAD, AND ADJUSTABLE CHEEK WELD. |

The SOPMOD buttstock is the preferred choice of USSOCOM and numerous militaries and law enforcement agencies worldwide.



This is the buttstock you would find on a standard issue M4 rifle system. This battle-tested stock is both light weight and effective.



Our Designated Marksman Rifle stock, or DMR for short is exceptionally flexible. Its mobile buttpad and cheek weld provide shooters a comfortable and consistent sight picture.



ISO 9001:2015 Registered. Our products are manufactured in compliance with the Berry Amendment.
© 2019 Lewis Machine & Tool Company all rights reserved. All weights and measurements are approximate.
100% USA Made. LMTDEFENSE.COM

BARREL

| BARREL | TWIST RATE & MATERIAL | UPPER COMPATABILITY | WEAPON LENGTH SOPMOD COLLAPSED | WEAPON LENGTH SOPMOD EXTENDED | WEAPON WEIGHT |
|--------------------|---|---------------------|--------------------------------|-------------------------------|--------------------|
| 10.5" 5.56 (.223) | 1:7" CHROME MOLY | CARBINE ONLY | 27.5" / 699 MM | 30.8" / 781 MM | 6.47 LBS / 2.93 KG |
| 11.5" 5.56 (.223) | 1:7" CHROME MOLY | CARBINE ONLY | 28.5" / 724 MM | 31.8" / 806 MM | 6.57 LBS / 2.98 KG |
| 14.5" 5.56 (.223) | 1:7" CHROME MOLY | CARBINE OR RIFLE | 31.5" / 800 MM | 34.8" / 883 MM | 6.91 LBS / 3.14 KG |
| 16" 5.56 (.223) | 1:7" CHROME MOLY OR 1:7.5" STAINLESS 5R | CARBINE OR RIFLE | 33.0" / 838 MM | 36.3" / 921 MM | 6.99 LBS / 3.17 KG |
| 20" 5.56 (.223) | 1:7" CHROME MOLY OR 1:7.5" STAINLESS 5R | RIFLE ONLY | 37.0" / 940 MM | 40.3" / 1022 MM | 7.54 LBS / 3.42 KG |
| 10.5" 300 BLACKOUT | 1:7" CHROME MOLY | CARBINE ONLY | 27.5" / 699 MM | 30.8" / 781 MM | 6.37 LBS / 2.89 KG |
| 16" 300 BLACKOUT | 1:7" CHROME MOLY | CARBINE OR RIFLE | 33.0" / 838 MM | 36.3" / 921 MM | 6.99 LBS / 3.17 KG |
| 20" .224 VALKYRIE | 1:7" CHROME MOLY | RIFLE ONLY | 37.0" / 940 MM | 40.3" / 1022 MM | 7.54 LBS / 3.42 KG |



10.5" CHROME 300 BLACKOUT



14.5" CHROME 5.56



16" STAINLESS 5.56



20" CHROME .224 VALKYRIE

The table above provides only the most common barrel offerings from LMT® and is only about one third of barrels compatible with the MRP® system. Our barrels are cryogenically treated for lasting durability and thoroughly tested for quality and accuracy. Barrel change does not require any special tools, is as simple as the removal of two screws, and can be performed in under one minute.

UPPER RECEIVER

| UPPER | WEIGHT DIFFERENCE | DESCRIPTION |
|-------|------------------------|---|
| CQB | STANDARD | QUAD RAIL WITH 14.5" OF RAIL AT 12 O'CLOCK; 8" RAIL ON 3, 6 AND 9 O'CLOCK. |
| LM8 | -0.078 LBS / -0.036 KG | 14.5" OF RAIL AT 12 O'CLOCK; 3, 6 AND 9 O'CLOCK HAVE INSTALLATION POINTS FOR LMT RAIL SEGMENTS. |
| MLC | -0.262 LBS / -0.119 KG | 14.5" OF RAIL AT 12 O'CLOCK; 7 REMAINING SIDES HAVE MLOK ATTACHMENT POINTS. |
| MRP | +0.318 LBS / +0.144 KG | QUAD RAIL WITH 18.5" OF RAIL AT 12 O'CLOCK; 12" RAIL ON 3, 6 AND 9 O'CLOCK. |
| SLK | +0.156 LBS / +0.070 KG | 18.5" OF RAIL AT 12 O'CLOCK; 3, 6 AND 9 O'CLOCK HAVE INSTALLATION POINTS FOR LMT RAIL SEGMENTS. |
| MLR | +0.026 LBS / +0.012 KG | 18.5" OF RAIL AT 12 O'CLOCK; 7 REMAINING SIDES HAVE MLOK ATTACHMENT POINTS. |



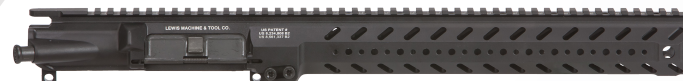
CQB



MRP



LM8



SLK

LMT® produces the only one-piece upper receiver in the industry. Made of high grade aluminum, this provides a top end that is both durable and accurate. Its unique design allows the operator to change barrel length and caliber in under one minute with minimal point of impact shift. We offer three styles of upper receiver in both carbine and rifle length.



MLC

MLR